



SEE 2019 CATALOG



OFFICE SPACE FURNITURE





BACKGROUND AND DISCLAIMER

The Supported Employment Enterprises was established in 1948 to provide employment opportunities for persons with disabilities who came out of the second world war. Currently the entity employs just over 1000 persons with disabilities in 12 factories located in 7 of the 9 provinces in South Africa. The only provinces currently without our facilities is Limpopo and Mpumalanga.

The entity is under the Department of Labour and as part of its mandate the SEE intends to employ an additional 150 persons with disabilities by the end of March 2020. The entity is also in the process of establishing a factory in Limpopo and soon a new factory in Mpumalanga will follow.

The SEE is now a member of the Proudly South Africa campaign and promotes procurement of locally manufactured products. We also pride ourselves in the fact that we use locally sourced raw materials in our production processes.

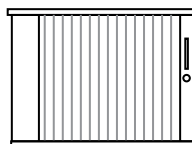
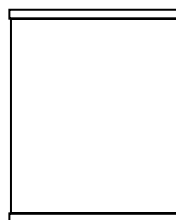
OFFICE SPACE FURNITURE





Roller Door Credenza

Size: 1200mm X 500 mm
x 760mm
Maple Melamine
Lockable



Coimbra and White Drawer box

COIMBRA04WDB

White face drawers
4 drawer pedestal
Central locking



Coimbra Melamine System

COIMBRA01MS

Size: (W) 1100mm X
(D) 500mm (H) 1500mm
Cabinet System
Swing doors
Will adjustable
Lockable



Coimbra and white pedenza

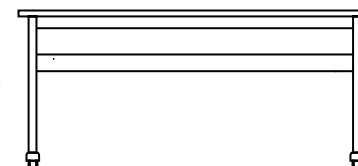
COIMBRA01WP

Size (w) 1200mm X (D) 500mm X
(H) 740mm
Coimbra face drawers
Fire drawers

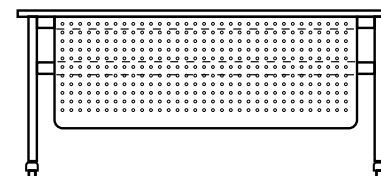


Mobile Expo Table**MOBILE01ET**

Size: (W) 1800mm X (D) 500mm
X (H) 760mm
Foldable on Castors

**Mobile Expo Table****MOBILE01ET**

Size: (W) 1800mm X (D) 500mm X
(H) 760mm
Foldable on Castors

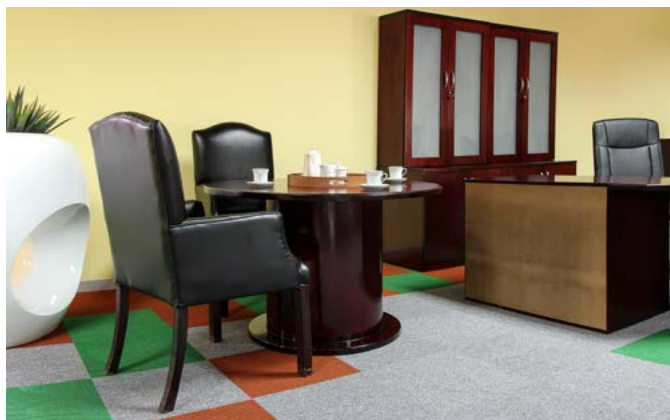


A photograph of an office interior featuring a large dark wood desk, a round table with two chairs, and a tall filing cabinet. The floor has a colorful geometric pattern. The text is overlaid on this image.

OFFICE SPACE FURNITURE

Supported Employment Enterprises manufactures office furniture from 100% locally sourced raw materials

All furniture is manufactured by persons with disabilities
The mandate of the SEE is to create employment opportunities
for persons with disabilities

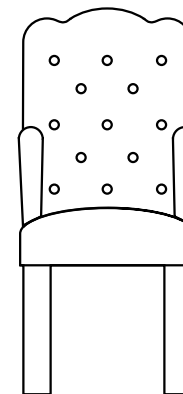


OFFICE SPACE FURNITURE

Rexit Chair

REXIT01UAC

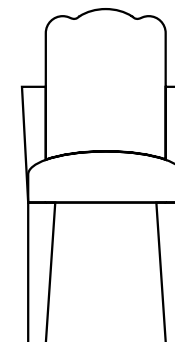
Fabric Upholstered
Dimond buttons



Rexit Upholstered Arms Chair

REXIT02UAC

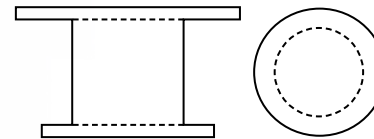
Black leather Rexit upholstered
arms chair



**Boston Round
Conference Table**

BOSTON01RCT

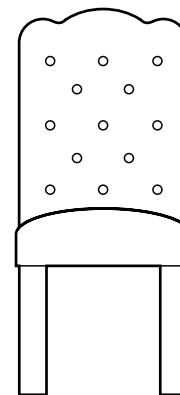
Size: 1800 Dia
Mahogany stained
Veneer Wood



Rexit Chair

REXIT01C

Rexit chair straight
Brown leather
Diamond button





Tub Chair

TUB01C

Various styles

Busi Two Seater Couch
BUSI01TSC

Fabric upholstered

Tufted back





Chesterfield Couch

CHE01C

Various styles



Visitors Chair
VISITORS01C

Gliding based
TB3



Visitors Chair
VISITORS01C

Gliding based
TB11



Visitors Chair
VISITORS01C

Gliding based
IA24

Chair Nkabi Netted back**CHAIRNKABINB01**

Chair Nkabi Netted back on castors with an adjustable height and back

**Visitors Business Class Chair****VISITORSBCB01C**

Black leather upholstered





Chair High Back, SM Fabric Uph

PVC armrests
PVC 5 star base
upholstery fabric options available



Chair Visitor, Leather Uph

PVC armrests intergral base
upholstery leather options available



Chair High Back, Leather Uph-

Chrome armrests
chrome 5 star base
upholstery leather options available



Sit - Up Chair (XBX)

SIT-UPC01S(XBX)

Sit-up chair on custors with an adjustable height and back



Sit - Up Chair (ANA)

SIT-UPC01S(ANA)

Sit-up chair on custors with an adjustable height and back



Typist Chair

TYPISTCC01

Sit-up chair on custors with an adjustable height and back



Chair H/B full Shell

Chrome arms and base Fabric uphol
PU arm pads



Sit - Up Chair (ANA)

SIT-UPC01S(ANA)



Typist Chair

TYPISTCC01



Visitor Frontline Bench

VISITOR01FC

3 Seater fabric upholstered in standard red fabric

Upholstery fabric options available



**1. Chair Epping leather upholstery
High Back (Classic design)**

Wooden frame
Five star base on castors



2. Chair Rexit leather upholstery

Wooden arms
Five star base on castors
Diamond button



Chair high back leather upholstered

PVC armrests and five star base
Leather upholstery options available



Roller shutter System Cabinet

Cherry Melamine
1200 (w) X 500 (D) x 1750 (h)



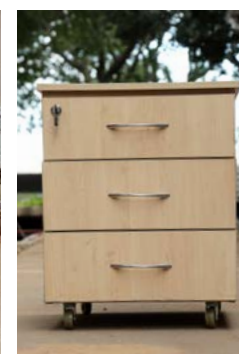
Four drawer filing cabinet

Cherry venner wood
central locking



Wall Unit Glass/Wood

Cherry Veneer
Lockable



Oak Melamine L-Shape desk

3 drawer mobile pedestal

Sliding door credenza

Swing door system cabinet oak melamine



Contact Our Factories

Bloemfontein Factory

197 Nelson Mandela Street
Univesitas
Tel: + 27 (0)51-444-1022

Durban Factory

216 Balfour Road
Jacobs, Durban
Tel: + 27 (0)31-461-3862

East London Factory

1 Electron Road
Gately
Tel: + 27 (0)43-736-2248

Epping, Western Cape

Greenville avenue
Epping industria
Tel: + 27 (0)21-531-3058

Johannesburg Factory

18 Hippo Street
Stuttaford, Springfield
Tel: + 27 (0)11-683-4356

Kimberly Factory

Mint Building
Harrison Street
Tel: + 27 (0)53-831-1667

N'dabeni, Western Cape

Inyoni Street
Cape Town
Tel: + 27 (0)21-531-6545

Pietermaritzburg Factory

387 Camp Building
Oribey Village
Tel: + 27 (0)33-386-2211

Port Elizabeth Factory

154 Haupt Street
Sidwell
Tel: + 27 (0)41-453-2021

Potchefstroom Factory

5 Promos Road
Pitch Industria
Tel: + 27 (0)18-293-0660

Johannesburg, Selby Factory

17 Luab Street
Village main, selby
Tel: + 27 (0)11-334-9739

Pretoria, Silverton Factory

221 Moreleta Street
Silverton
Tel: + 27 (0)12-843-7300

Seshego Factory

Seshego Industrial Park, Factory No. 52 & 8
Freedom Drive
Seshego, Limpopo
Tel: 076-278-0906

Delivery available

Installation services available on request

contact of customer services team:
SEEcleintservices@labour.gov.za



labour

Department:
Environmental Affairs
REPUBLIC OF SOUTH AFRICA

